

Juventus

Vox Juventus

HB-Nr. 499505 aAa: 423 Beta casein: A2A2 Kappa casein: AA Haplotypen: -
Reg. No. HODEU001406872078

Pedigree

Real Syn x VG-86 Massey x Maximus x VG-88 Marius x Modesty x VG-87 Daddy x VG-87
Robust x VG-87 Zenith x Rudy Missy EX-92 Familie

Functionality

Cow conception rate	CCR	+
Somatic Cell Score	SCS	2,57
Productive Life	PL	+5,30
Livability	LIV	+3,20
Sire Calving Ease	SCE	1,30
Daughter Calving Ease	DCE	1,50

Health

Health Index	Health index	+9,90
Mastitis	Mastitis	+5,10
Hoof Health	Hoof health	-
Ketosis	Ketose	+0,60
Disp. Abomasum	Disp. Abomasum	+0,50
Metritis	Metritis	+1,10
Ret. Placenta	Ret. Placenta	-0,20

Exterieur

PTAT +0,61

Dairy Character	DC	-0,50
Body Composite	BC	-0,34
Feet & Legs	F&L	+0,52
Udder Composite	UDC	+0,65

Linear

		-2	0	2	
Stature	small			-0.23	tall
Dairy character	tight rib			-0.50	open rib
Body depth	shallow			-0.71	deep
Strength	frail			-0.31	strong
Rump angle	high			+0.08	sloped
Thurl width	narrow			-0.42	wide
Rear legs side view	posty			+0.32	sickled
Rear legs rear view	hocked in			+0.11	parallel
Foot angle	flat			+0.09	steep
F&L score	poor			+0.55	good
Rear udder height	deep			+0.56	high
Rear udder width	narrow			+0.23	wide
Udder cleft	weak			-0.05	strong
Front teat placement	wide			-0.27	close
Rear teat placement	wide			-0.47	close
Fore udder attachment	loose			+1.02	strong
Udder depth	deep			+1.14	high
Teat length	short			+0.22	long

- Index Netherland: 420 NVI
- Index France: 206 ISU
- Index Spain: 1275 ICO
- Index Poland: 158 PF

Total index

\$NM 727

04-2026

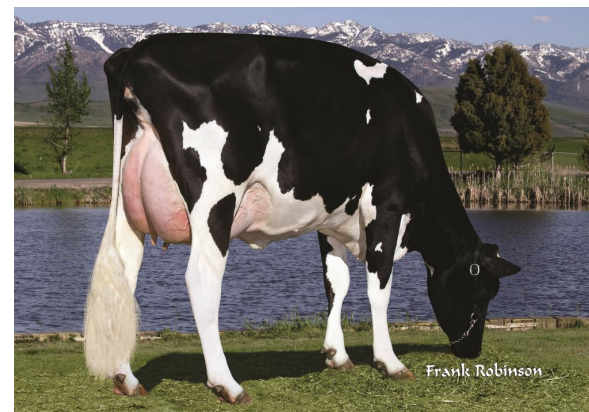
gTPI 3175

Production

Milk	+443	Protein %	+0,04
Fat %	+0,12	Protein yield	+24
Fat yield	+51	CFP	



Seagull-Bay Miss America EX-91



Ammon Peachey Shauna EX-92

