

Skyliner-Red

NH Evolution Skyliner-Red

HB-Nr. 499196 aAa: 243 Beta casein: A1A1 Kappa casein: BB Haplotypen: HRR
Reg. No. HODEU000771045121

Pedigree

Sputnik x VG-85 Gywer x VG-85 Styx x VG-85 Pat-Red x VG-85 Hydro x VG-88 Epic x
Des-Y-Gen Planet Silk EX-90

Functionality

| | | |
|-----------------------|-----|-------|
| Cow conception rate | CCR | |
| Somatic Cell Score | SCS | 2,77 |
| Productive Life | PL | +1,80 |
| Livability | LIV | +0,50 |
| Sire Calving Ease | SCE | 0,90 |
| Daughter Calving Ease | DCE | 1,60 |

Health

| | | |
|----------------|----------------|-------|
| Health Index | Health index | +1,20 |
| Mastitis | Mastitis | +0,80 |
| Hoof Health | Hoof health | - |
| Ketosis | Ketose | -0,50 |
| Disp. Abomasum | Disp. Abomasum | +0,00 |
| Metritis | Metritis | +0,50 |
| Ret. Placenta | Ret. Placenta | -0,60 |

Exterieur

PTAT -0,08

| | | |
|-----------------|-----|-------|
| Dairy Character | DC | -0,13 |
| Body Composite | BC | -0,36 |
| Feet & Legs | F&L | +1,29 |
| Udder Composite | UDC | -0,13 |

Linear

| | | -2 | 0 | 2 | |
|-----------------------|-----------|----|---|-------|----------|
| Stature | small | | | -0.28 | tall |
| Dairy character | tight rib | | | -0.13 | open rib |
| Body depth | shallow | | | -0.50 | deep |
| Strength | frail | | | -0.40 | strong |
| Rump angle | high | | | +0.35 | sloped |
| Thurl width | narrow | | | -0.46 | wide |
| Rear legs side view | posty | | | -0.91 | sickled |
| Rear legs rear view | hocked in | | | +1.53 | parallel |
| Foot angle | flat | | | +0.77 | steep |
| F&L score | poor | | | +1.08 | good |
| Rear udder height | deep | | | +0.16 | high |
| Rear udder width | narrow | | | +0.25 | wide |
| Udder cleft | weak | | | -0.42 | strong |
| Front teat placement | wide | | | +0.02 | close |
| Rear teat placement | wide | | | -0.62 | close |
| Fore udder attachment | loose | | | -0.44 | strong |
| Udder depth | deep | | | -0.40 | high |
| Teat length | short | | | +0.72 | long |

- TOP 10 RZG bull
- Spain: 5007 gICO
- Netherlands: 284 NVI

Total index

04-2026

\$NM 323

gTPI 2773

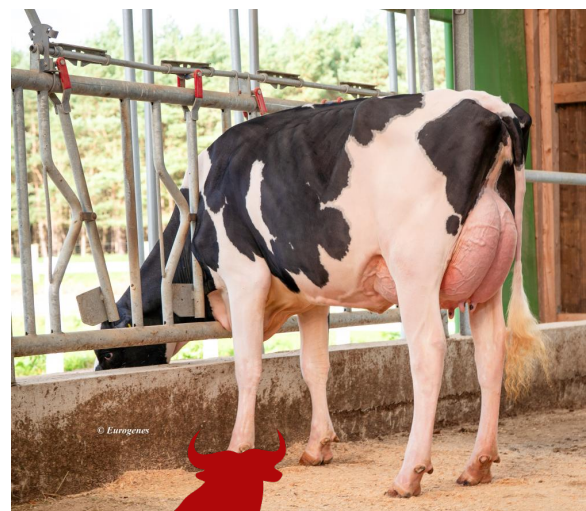
Production

| | | | |
|-----------|-------|---------------|-------|
| Milk | +1786 | Protein % | -0,10 |
| Fat % | -0,21 | Protein yield | +30 |
| Fat yield | +14 | CFP | |



Wolfhard Schulze

NH Evolution Skyliner-Red



© Euragenes

EHL S

