

High Caliber

Dwgood High Caliber-ET

HB-Nr. 773114 aAa: 213 Beta casein: A1A1 Kappa casein: BB Haplotypen: -
Reg. No. HO840003251632075

Pedigree

Overdo x VG-86 AltaZazzle x Crimson x VG-85 Modesty x VG-85 Tuffenuff x VG-87 O-Daddy
x VG-87 Robust x Rudy Missy EX-92 Fam.

Functionality

Cow conception rate	CCR	
Somatic Cell Score	SCS	2,62
Productive Life	PL	+3,00
Livability	LIV	+1,50
Sire Calving Ease	SCE	0,90
Daughter Calving Ease	DCE	0,80

Health

Health Index	Health index	+7,90
Mastitis	Mastitis	+3,50
Hoof Health	Hoof health	-
Ketosis	Ketose	+0,30
Disp. Abomasum	Disp. Abomasum	+0,30
Metritis	Metritis	+1,60
Ret. Placenta	Ret. Placenta	+0,30

Exterieur

PTAT +0,77

Dairy Character	DC	+0,01
Body Composite	BC	-0,26
Feet & Legs	F&L	+0,47
Udder Composite	UDC	+1,16

Linear

		-2	0	2	
Stature	small			-0.32	tall
Dairy character	tight rib			+0.01	open rib
Body depth	shallow			-0.35	deep
Strength	frail			-0.33	strong
Rump angle	high			+0.66	sloped
Thurl width	narrow			+0.31	wide
Rear legs side view	posty			-0.81	sickled
Rear legs rear view	hocked in			+0.42	parallel
Foot angle	flat			+0.76	steep
F&L score	poor			+0.35	good
Rear udder height	deep			+0.77	high
Rear udder width	narrow			+0.85	wide
Udder cleft	weak			+0.14	strong
Front teat placement	wide			+0.97	close
Rear teat placement	wide			+0.89	close
Fore udder attachment	loose			+1.58	strong
Udder depth	deep			+1.27	high
Teat length	short			-0.01	long



Total index

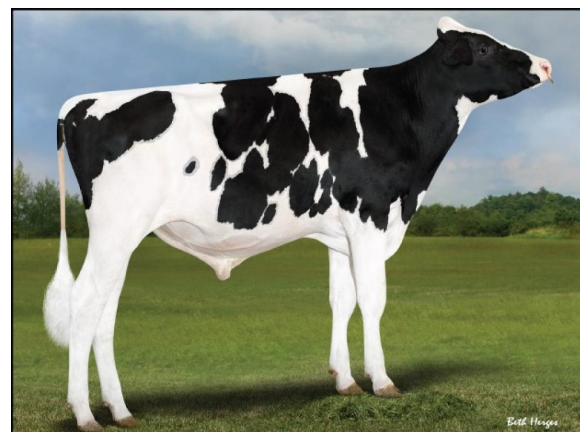
04-2026

\$NM 547

gTPI 3035

Production

Milk	-21	Protein %	+0,09
Fat %	+0,22	Protein yield	+22
Fat yield	+58	CFP	



Dwgood High Caliber-ET



2nd dam: Speek-NT-ET VG-85

