

Sir Silky-Red

NH Sir Silky-Red

HB-Nr. 499195 aAa: 234 Beta casein: A1A1 Kappa casein: AB Haplotypen: HRR

NAAB-code: Reg. No. 276000771045129

Pedigree

Ronald x EX-91 Arvis x VG-86 Snowman x Planet Silk EX-90 x VG-86 Bolton x Glen Drummond Splendor VG-86 Fam.

Functionality

Daughter Pregnancy Rate	RZR	DPR	118
Somatic cell score	RZS	SCS	112
Productive Life	RZN	PL	107
Milking Speed	RZD	MS	108
Sire calving ease	KVd	SCE	101
Daughter calving ease	RZKm	DCE	113
Body Condition Score	BCS	BCS	92

Health

Health index	RZGesund	105
Udder health	RZEuterfit	103
Claw health	RZKlauen	99
Fertility	RZRepro	105
Metabolic stability	RZMetabol	104
DDcontrol	DDcontrol	96
Calves fitness	RZKälberfit	97
Persistency	RZPersistenz	102

Exterieur

RZE 117

Dairy Character	DC	113
Body Composite	BC	92
Feet & Legs	F&L	100
Udder	UDC	125

Linear

		76	100	124	
Stature	small				133 tall
Rib structure	flat				106 arched
Body depth	shallow				100 deep
Strength	frail				90 strong
Rump angle	high pins				98 sloped
Thurl width	narrow				96 wide
Rear legs side view	posty				84 sickled
Foot angle	flat				127 steep
Hock quality	coarse				96 dry
Rear legs rear view	hocked in				99 parallel
Front feet orientation	hocked in				78 parallel
Locomotion	poor				93 good
Rear udder height	deep				120 high
Udder cleft	weak				104 strong
Front teat placement	wide				107 close
Rear teat placement	wide				104 close
Fore udder attachment	loose				115 strong
Udder balance	rear deep				84 front deep
Udder depth	deep				127 high
Teat length	short				101 long

• son of the Reserve National R&W Champion in Germany

Total index

04-2026

RZG 115

RZ€ 449

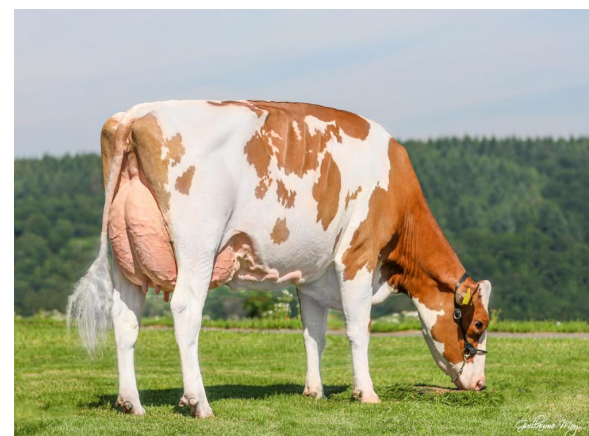
Production

RZM 104

Milk	+1039	Protein %	-0,19
Fat %	-0,46	Protein kg	+16
Fat kg	-7		



NH Sir Silky-Red



Dam: NH Arvis Silky-Red EX-91

