

Skyliner-Red

NH Evolution Skyliner-Red

HB-Nr. 499196 aAa: 243 Beta casein: A1A1 Kappa casein: BB Haplotypen: HRR
 NAAB-code: 725HO00003 Reg. No. 276000771045121

Pedigree

Sputnik x VG-85 Gywer x VG-85 Styx x VG-85 Pat-Red x VG-85 Hydro x VG-88 Epic x
 Des-Y-Gen Planet Silk EX-90

Functionality

Daughter Pregnancy Rate	RZR	DPR	101
Somatic cell score	RZS	SCS	124
Productive Life	RZN	PL	117
Milking Speed	RZD	MS	97
Sire calving ease	KVd	SCE	116
Daughter calving ease	RZKm	DCE	109
Body Condition Score	BCS	BCS	90

Health

Health index	RZGesund	115
Udder health	RZEuterfit	107
Claw health	RZKlauen	117
Fertility	RZRepro	106
Metabolic stability	RZMetabol	103
DDcontrol	DDcontrol	117
Calves fitness	RZKälberfit	107
Persistency	RZPersistenz	118

Exterieur

RZE 115

Dairy Character	DC	118
Body Composite	BC	94
Feet & Legs	F&L	121
Udder	UDC	104

Linear

		76	100	124	
Stature	small				101 tall
Rib structure	flat				107 arched
Body depth	shallow				93 deep
Strength	frail				93 strong
Rump angle	high pins				102 sloped
Thurl width	narrow				91 wide
Rear legs side view	posty				85 sickled
Foot angle	flat				112 steep
Hock quality	coarse				112 dry
Rear legs rear view	hocked in				118 parallel
Front feet orientation	hocked in				101 parallel
Locomotion	poor				112 good
Rear udder height	deep				103 high
Udder cleft	weak				109 strong
Front teat placement	wide				111 close
Rear teat placement	wide				98 close
Fore udder attachment	loose				98 strong
Udder balance	rear deep				97 front deep
Udder depth	deep				96 high
Teat length	short				108 long

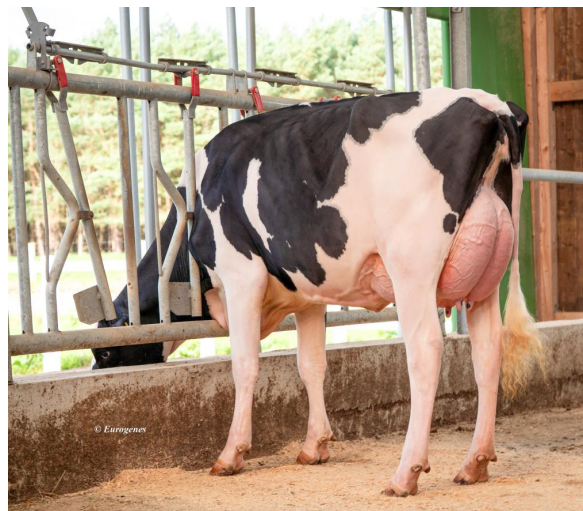
- TOP 10 RZG bull
- Spain: 5007 glCO
- Netherlands: 284 NVI

Total index 04-2026
 RZG 136 RZ€ 1753

Production RZM 129
 Milk +2829
 Fat % -0,56 Protein % -0,32
 Fat kg +44 Protein kg +58



NH Evolution Skyliner-Red



EHL Skyliner Anna

